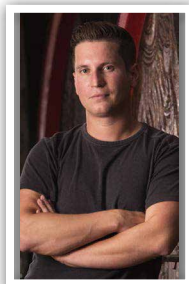


— FAMILIE —  
**ALLENDORF**  
*Rheingau*



**Nearly 250 years ago, Philipp Anton Allendorf founded our family estate.** Our family roots can be traced back to the 13th century, but wine wasn't until 1773 that he founded the estate. With nearly a quarter-millennium under our belt, our family has accumulated over 140 acres, and, thanks to Fritz Allendorf's leadership in the second half of the 20th century, most of these vines lie in prestigious sites like Hasensprung.

Currently, the estate has been taken over by Fritz's son, Ulrich, and he works tirelessly to continue the traditional winemaking practices of his father and the countless generations before him. Our whole family of Allendorfs are involved at the estate, from winemaking to finance to hospitality. Our youngest generation, Max has taken over as winemaker.



**Max, our winemaker,** has a very clear vision of how the individual sites are to be interpreted and how to craft an individual style for the Allendorf wines. The quest for perfection, craftsmanship, enough time and the patience to recognize the signs of nature are the principles he works on.

## *Modern Rheingau*

**Our estate vineyards** are in Assmannshausen, Rudesheim, Oestrich and Winkel, including the "VDP.GROSSE LAGE" classified sites: Hasensprung, Jesuitengarten, Berg Roseneck and Höllenberg. VDP.GROSSE LAGE designates the highest quality vineyard sites in Germany. The very best wines can be found here – bursting with expressive character derived from their site and special maturing potential. The sites are narrowly demarcated into parcels and planted with just the right grape variety for that particular location.

## *Quality first*

Over the past decades, large investments have been made to improve the quality, using modern technology, including their own ultra-efficient and extremely expensive and gentle cross-flow filtration plant. Gentle processing from vineyard to cellar is a top priority, but also upholding traditional methods whilst the transformation to organic certification started in 2021. Vineyard workers include a large flock of dwarf sheep, and stainless steel tanks and old oak casks can be seen in the cellars. The quality has reached a high benchmark, rewarded also by membership



in the elite VDP association since 1999. Riesling and Pinot Noir are mainly fermented dry, but fruity-style Riesling are also produced. Apart from their highest quality Great Growth dry Riesling, innovative products are also released, such as their dry estate bottled, yet affordable Riesling (Gutswein) as "Save Water, Drink Riesling", with or without alcohol!"

